

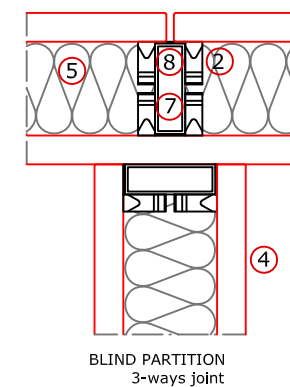
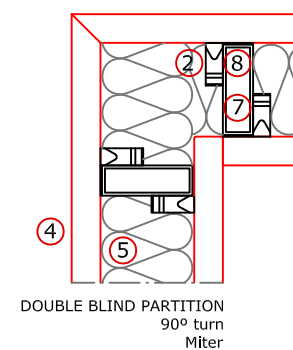
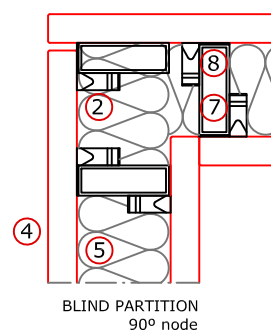
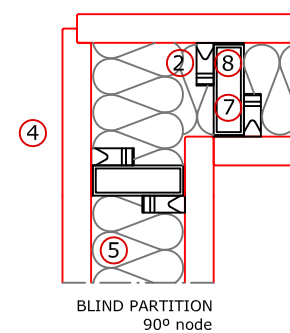
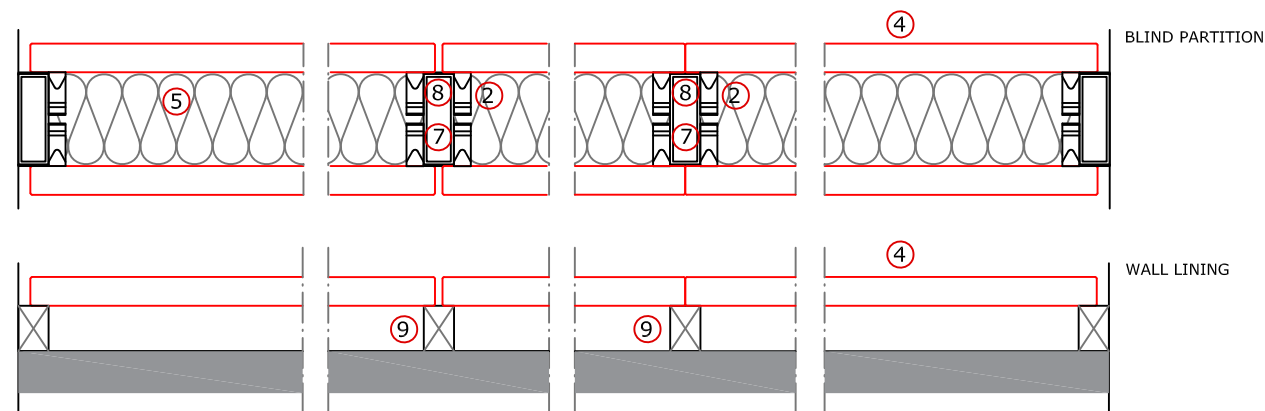
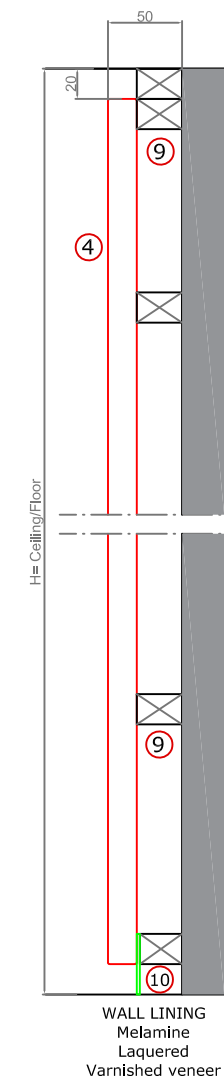
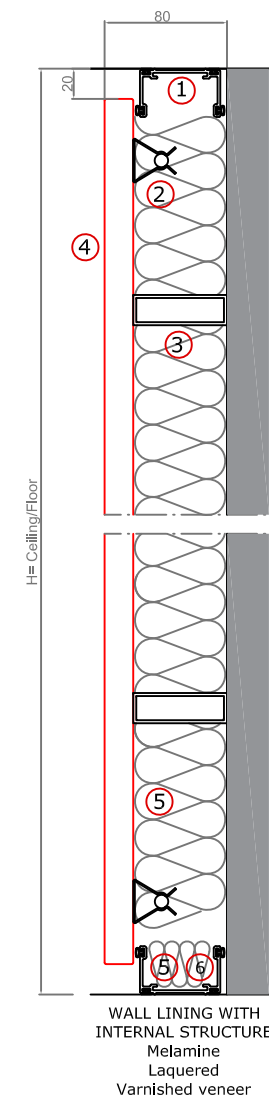
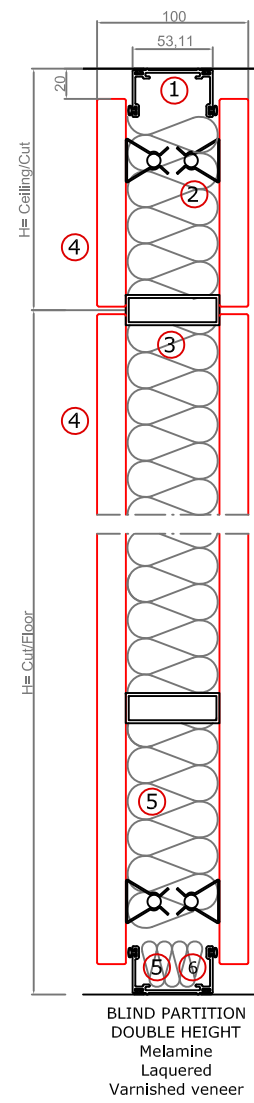
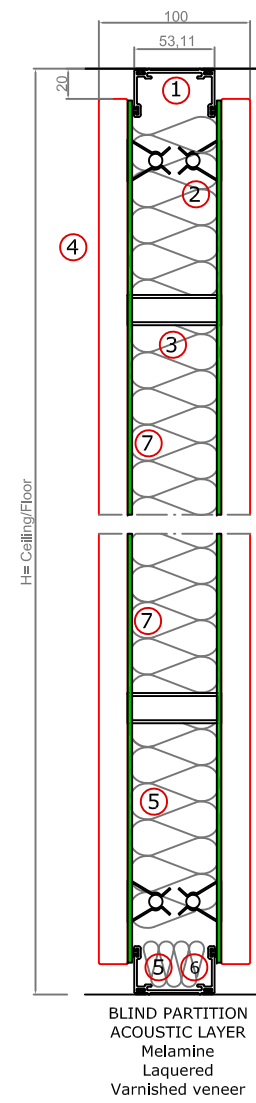
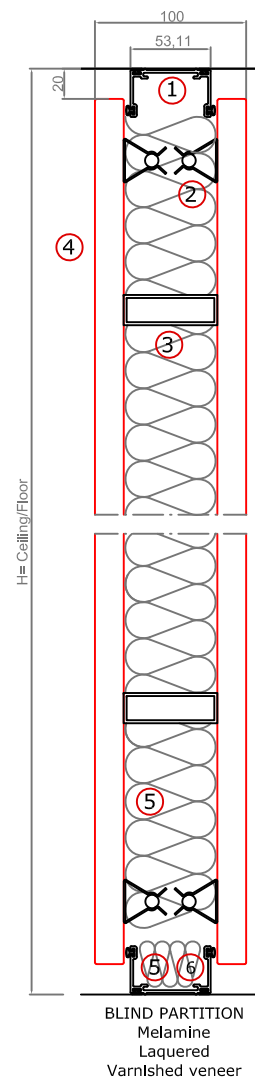
Vertical section

- ① Aluminium u-shaped profile
- ② Aluminium upper profile
- ③ 10-12mm laminated glass
- ④ Leveller
- ⑤ Aluminium floor track
- ⑥ Aluminium u-shaped profile
- ⑦ Double height aluminium profile
- ⑧ Internal reinforcement
- ⑨ Acoustic material

Horizontal section

- ① Aluminium u-shaped profile.
- ② Aluminium placket
- ③ 10-12mm laminated glass
- ④ Polycarbonate or 3M acrylic tape joint
- ⑤ 90° polycarbonate or 3M acrylic tape joint
- ⑥ 3-ways polycarbonate/3m acrylic tape joint
- ⑦ Acoustic material

MA7 BLIND PARTITION WALL LINING



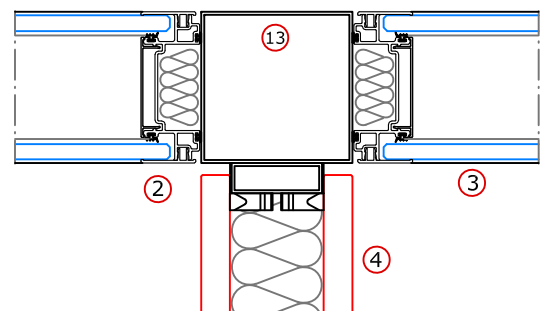
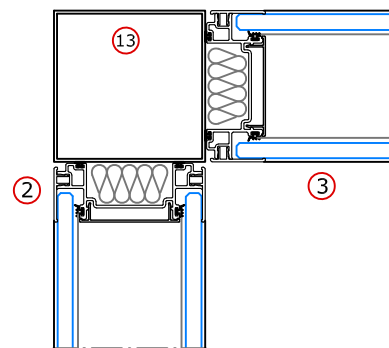
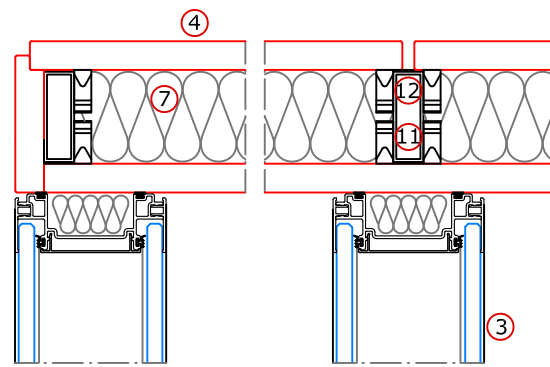
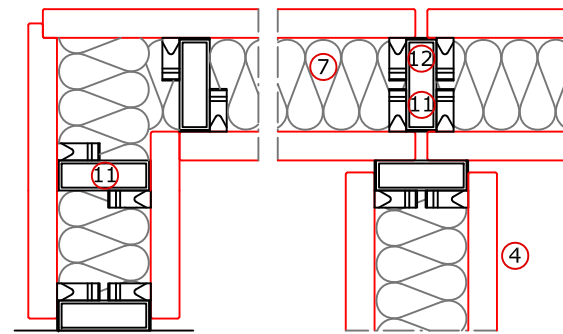
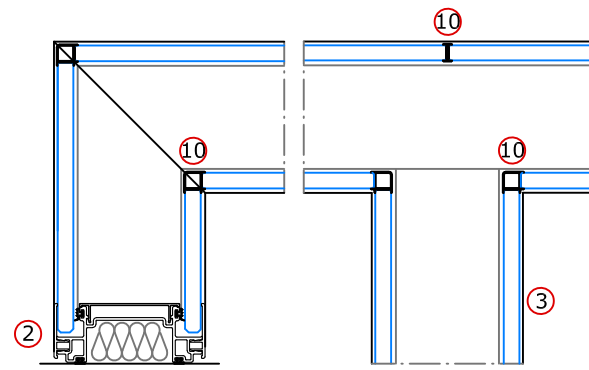
Vertical section

- ① Aluminium u-shaped profile
- ② Clips
- ③ Crossbar
- ④ 19mm blind panel
- ⑤ Acoustic material
- ⑥ Aluminium u-shaped profile
- ⑦ Acoustic layer TECSOUND
- ⑧ Pine crawl
- ⑩ Aluminium profile

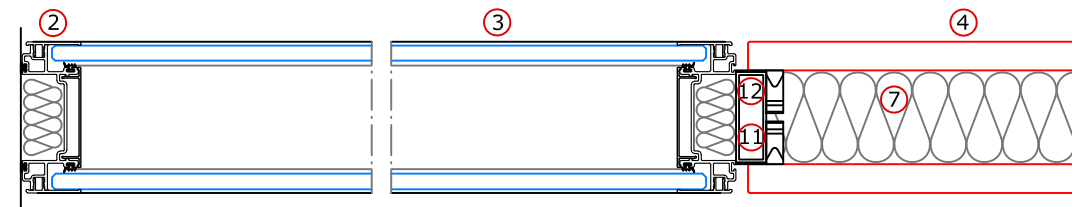
Horizontal section

- ① Aluminium u-shaped profile
- ② Clips
- ④ 19mm blind panel
- ⑤ Acoustic material
- ⑦ Mullion
- ⑧ Internal acoustic gasket
- ⑨ Pine crawl

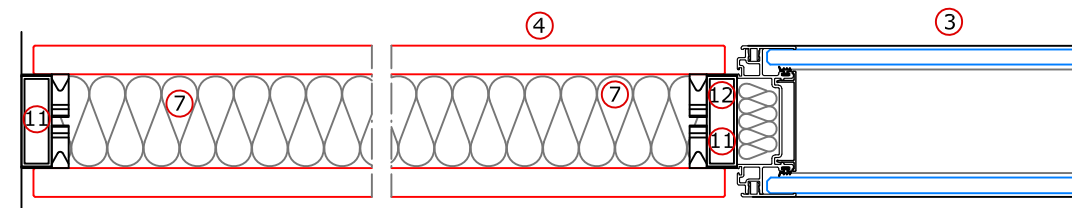
2-ways AND 3-ways JOINTS



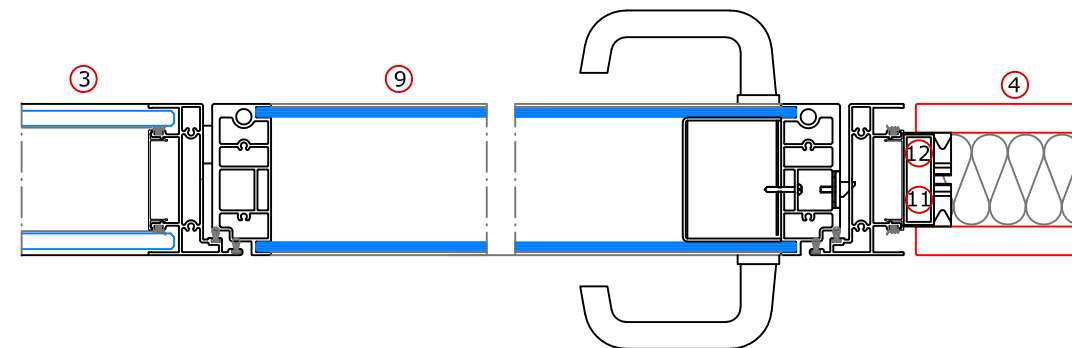
DOUBLE GLAZED/BLIND



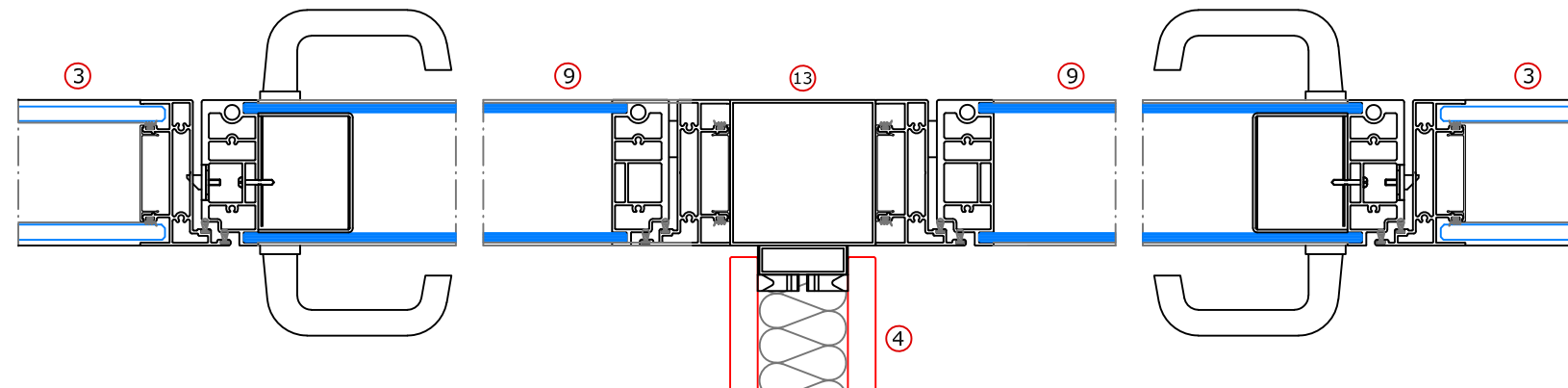
BLIND/DOUBLE GLAZED



DOUBLE GLAZED/DOOR/BLIND



DOORS DETAILS



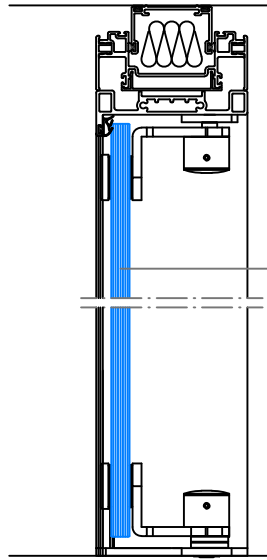
ARLEX

MA7
DETAILS

DOUBLE GLAZED
BLIND

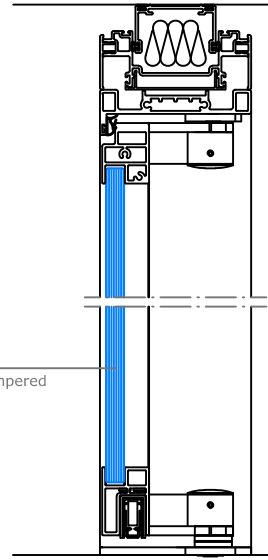
- ① Aluminium u-shaped profile
- ② Aluminium upper profile
- ③ 10-12mm double glazed
- ④ 19mm double panel
- ⑤ Aluminium floor track
- ⑥ Aluminium u-shaped profile
- ⑦ Acoustic material
- ⑧ Leveller
- ⑨ 100mm double glazed door
- ⑩ Polycarbonate joint
- ⑪ Wall abutment
- ⑫ Acoustic gaskets
- ⑬ 100x100mm aluminium profile

A HINGED DOOR
Single glazed



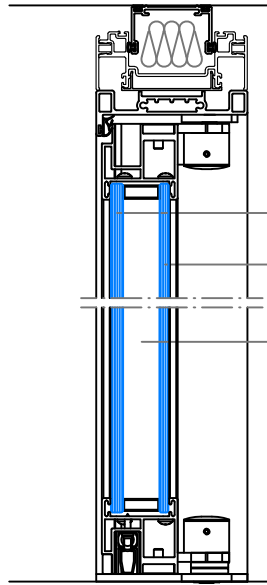
12mm tempered glass

B HINGED DOOR
Single glazed with frame



12mm tempered glass

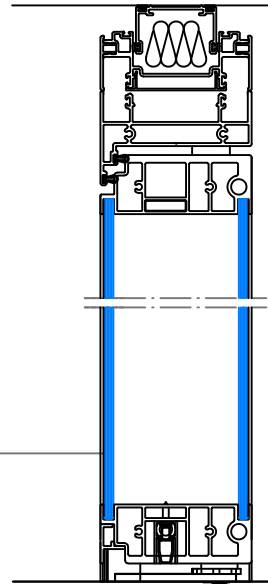
C HINGED DOOR
Double glazed



4+4 laminated glass
6mm tempered glass
24mm sealed chamber

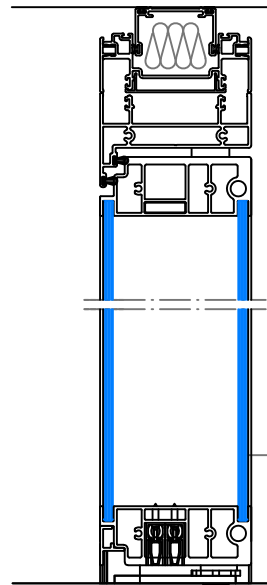
6mm tempered glass

D HINGED DOOR
100mm double glazed



4+4 laminated glass
6mm tempered glass
6mm tempered glass

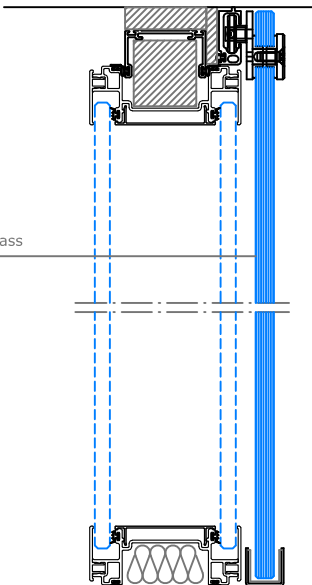
E HINGED DOOR
100mm double galzed Acoustic



12mm tempered glass

3+3mm laminated glass acoustic

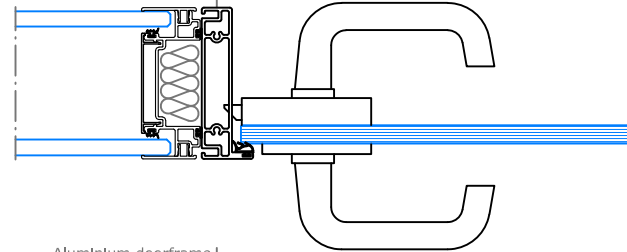
F SLIDING DOOR
Single glazed



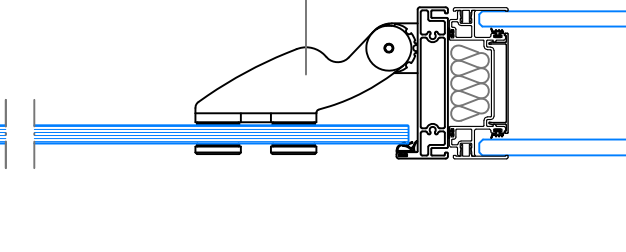
12mm tempered glass

3+3mm laminated glass acoustic

Aluminium doorframe

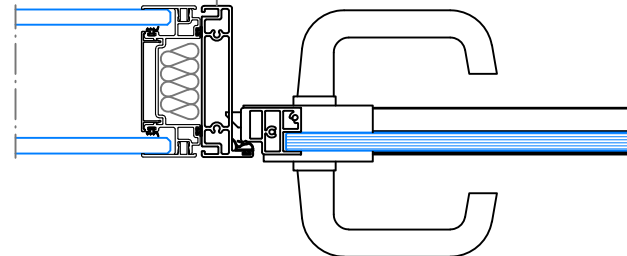


Hinge

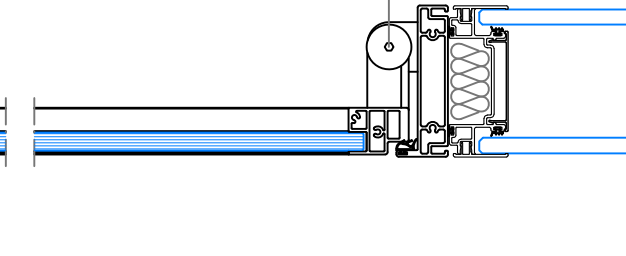


HINGED DOOR
Single Glazed
A

Aluminium doorframe

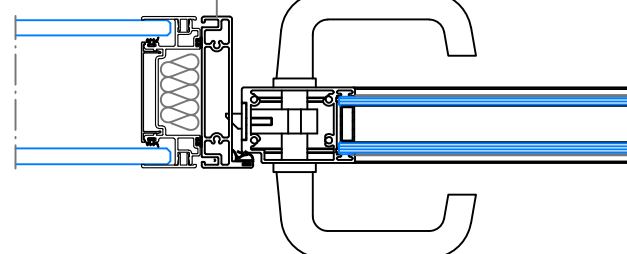


Hinge

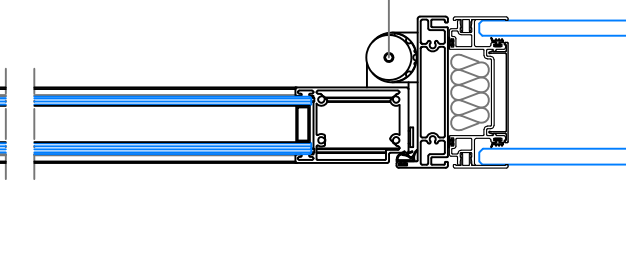


HINGED DOOR
Single Glazed with frame
B

Aluminium doorframe

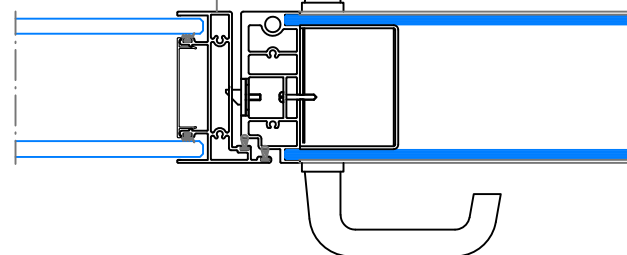


Hinge

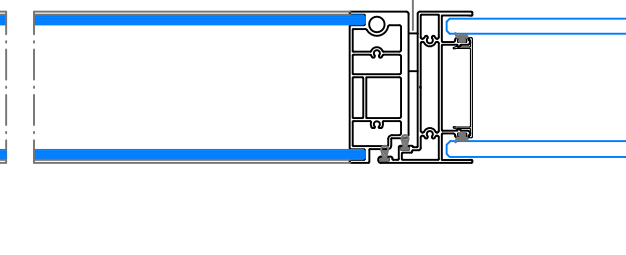


HINGED DOOR
Double Glazed
C

Aluminium doorframe

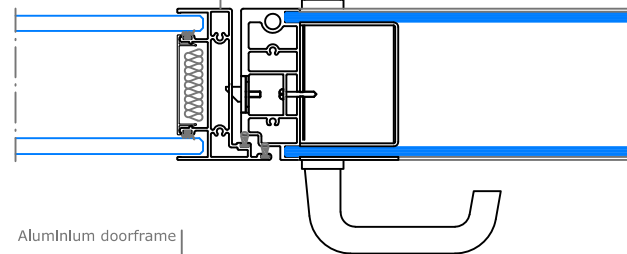


Hinged

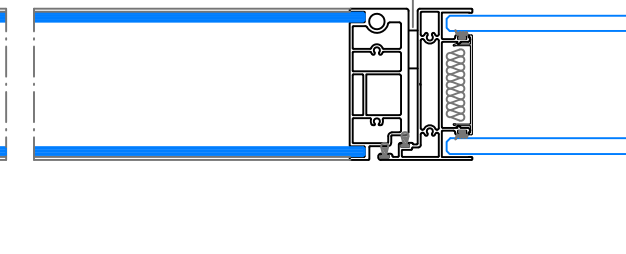


HINGED DOOR
100mm Double Glazed
D

Aluminium doorframe

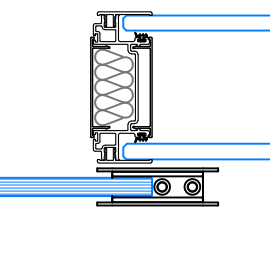
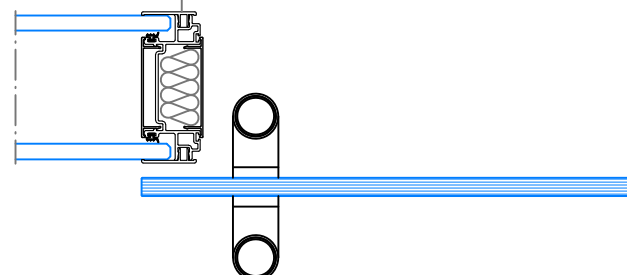


Hinged



HINGED DOOR
100mm double galzed Acoustic
E

Aluminium doorframe



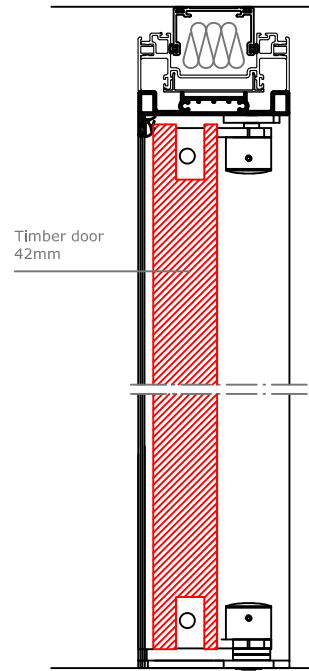
SLIDING DOOR
Single glazed
F

ARLEX

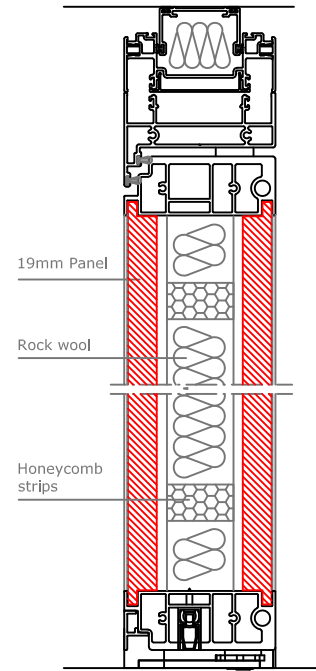
MA7
GLAZED DOORS

- A** Single glazed 12mm tempered hinged door
- B** Single glazed 12mm tempered hinged door aluminium framed
- C** Double glazed 43mm sealed unit hinged door aluminium framed
- D** Double glazed 100mm hinged door (double 6mm tempered glass)
- E** Double glazed 100mm Acoustic hinged door (double 3+3mm tempered glass Acoustic)
- F** Single glazed 12mm tempered sliding door

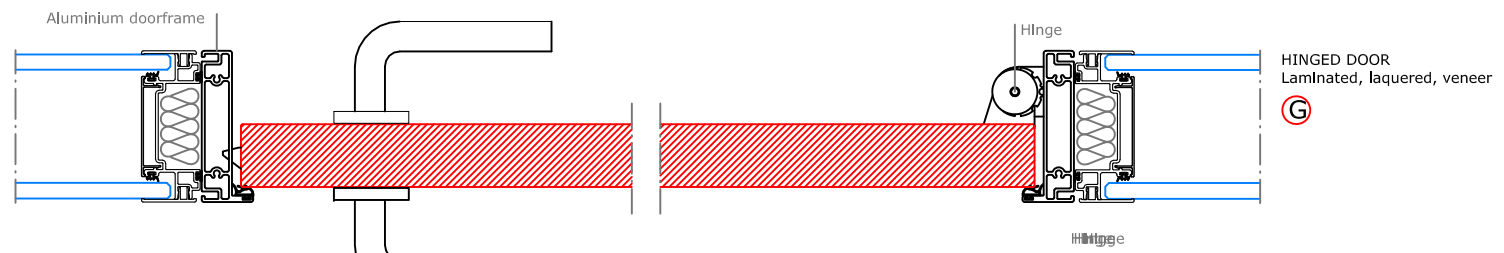
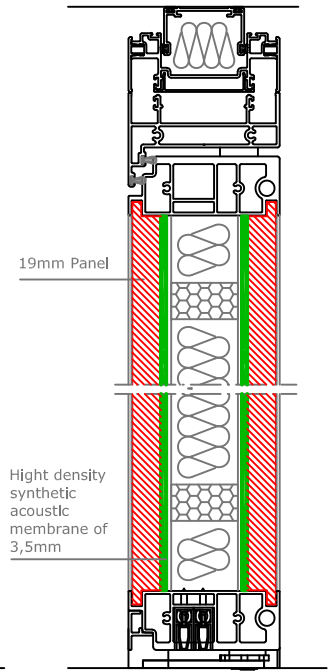
G HINGED BLIND DOOR
Laminated, laquered, veneer



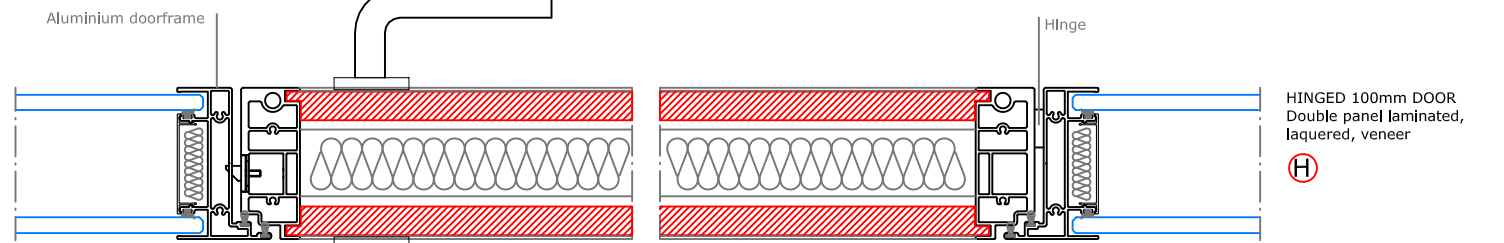
H HINGED 100mm BLIND DOOR
Laminated, laquered, veneer



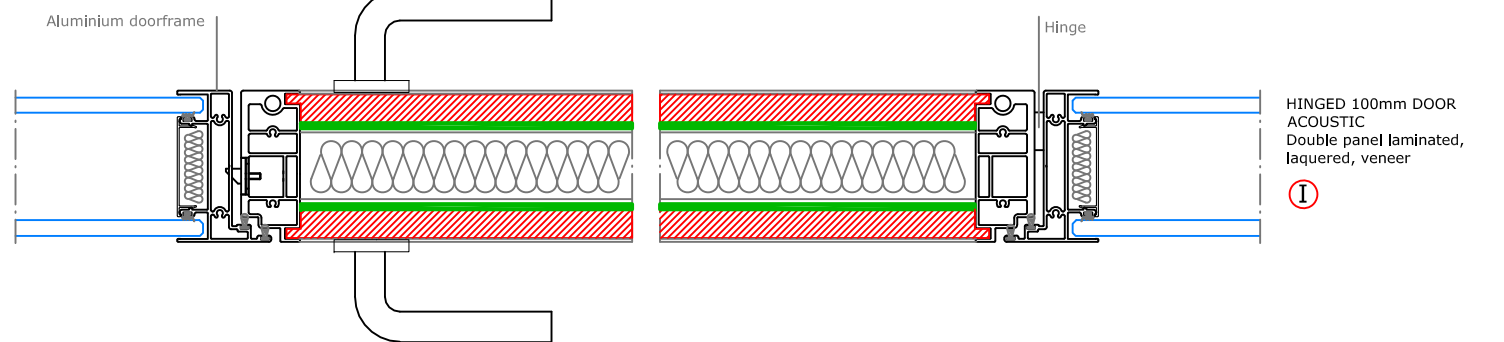
I HINGED 100mm BLIND DOOR
ACOUSTIC
Laminated, laquered, veneer



G HINGED DOOR
Laminated, laquered, veneer



H HINGED 100mm DOOR
Double panel laminated,
laquered, veneer



I HINGED 100mm DOOR
ACOUSTIC
Double panel laminated,
laquered, veneer

ARLEX

MA7
SOLID DOORS
TECHNICAL MODULE

G HINGED DOOR 42mm
Laminated, laquered, veneer

H HINGED 100mm DOOR
Double panel laminated, laquered, veneer
Guillotine

I HINGED 100mm DOOR Acoustic
Double panel laminated, laquered, veneer
Double guillotine

MA7 REGISTRABLE TECHNICAL MODULE

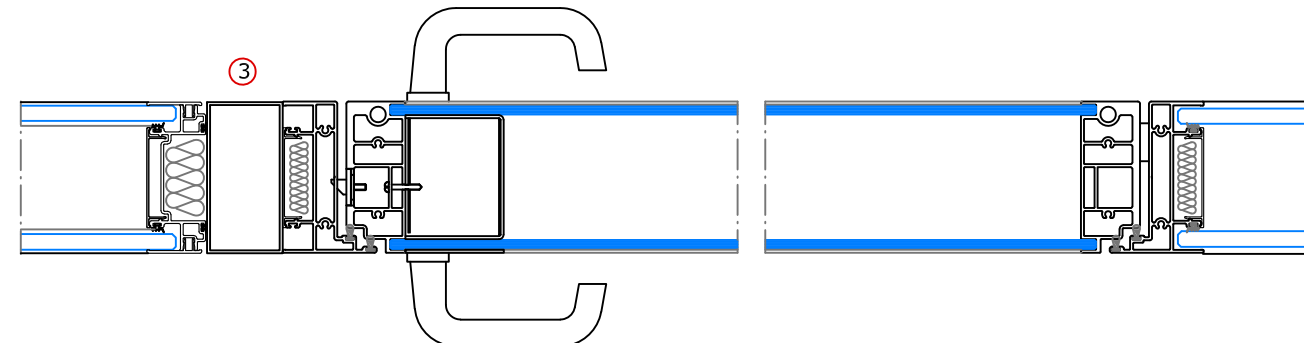
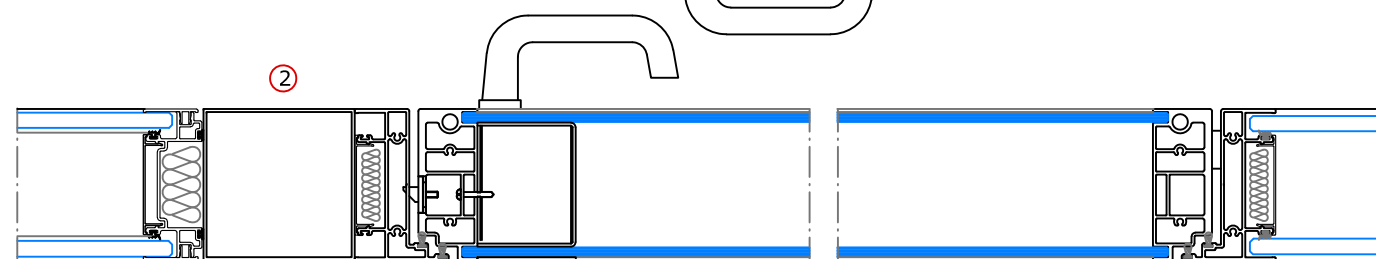
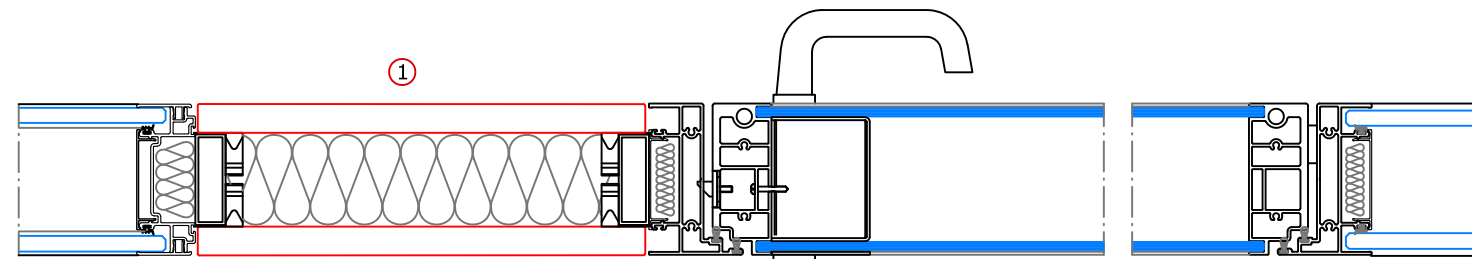
- * Registrable Electrification.
- * Electrification Module of dimensions according to project.
- * Finished in Melamine, Lacquered or Varnished Natural Wood Veneer

STANDARD TECHNICAL MODULE 100 MA7 Aluminum.

- * Not Registrable
- * 100x100mm electrification tube between the door profile and the start profile.
- * Anodized Finish, Epoxy Painted, Natural Wood Veneer or Melamine Veneer.

STANDARD TECHNICAL MODULE 50 MA7 Aluminum.

- * Not Registrable.
- * 50x100mm electrification tube between the door profile and the start profile.
- * Anodized Finish, Epoxy Painted, Natural Wood Veneer or Melamine Veneer.



Horizontal section

- 1** Technical module with removable panels
- 2** Technical module 100x100mm (Non removable)
- 3** Technical module 50x100mm (Non removable)